



**WORLD'S BEST  
ALLOY BULLBARS**

**East Coast Bullbars (ECB Pty Ltd)**

Tel: 07 3897 5700

Fax: 07 3283 1168

ecb@ecb.com.au www.ecb.com.au

29 Snook St  
Clontarf QLD 4019  
Australia

Po Box 122  
Margate QLD 4019  
Australia

**8S61SY / NB6S61SY / NB6S62SY**

REPLACES: 21.07.05

REVISED: 22.07.10

## **FITTING INSTRUCTIONS**

### **SUBARU FORESTER 06/02-6/05 TYPE 8, 63mm SERIES 2 NUDGE BAR & 63mm NUDGE BAR VEHICLE FRONTAL PROTECTION SYSTEM (VFPS) FOR AIR BAG & ADR COMPLIANT VEHICLES**

Check installation hardware before commencing.

1. Remove plastic under cover from vehicle. Four plastic clips, four 12mm head bolts. **See figure 1.**
2. Insert 3/8 x 3 1/2 bolt with 10mm flat washer (supplied) through rear mounting hole in steel mounting angle (supplied). Then place 50mm long steel chassis spacer (supplied) over bolt. **See figure 2.**
3. Install to under side of chassis. **See figure 3.** Use 40mm round alloy washer/ 10mm flat washer/ 10mm spring washer and nut (supplied) at top. **See figure 4. DO NOT TIGHTEN.**
4. Bend 3/8 nut/washer on wire (supplied) to shape so as to align with front hole in steel mounting angle and chassis. Insert through large hole in steel mounting angle and chassis. **See figure 5.** Use 3/8 x 1 1/2 bolt, flat washers and spring washers (supplied). **DO NOT TIGHTEN.**
5. Align steel mounting angles both parallel and central to vehicle ensuring the correct measurement so the ECB protection bar will mount on the outside of steel mounting angles. **TIGHTEN IN POSITION** and trim off excess wire to avoid rattling. **See figures 6 & 7.**
6. Hold plastic under cover against steel mounting angles and mark where trimming is needed to fit around steel mounting angles. Trim and reattach to vehicle. **See figures 8 and 9.**
7. Attach protection bar to outside of steel mounting angles. Use 3/8 x 1 1/2 bolt/washer on wire (supplied) to access forward most holes. Use 3/8 x 1 1/2 bolt/nuts and washers (supplied) for rear holes. Align with vehicle, position as high as possible for maximum ground clearance. **See figures 10, 11 and 12** for further positioning. **TIGHTEN ALL BOLTS/NUTS**, trim off excess wire.

### **ENSURE NUMBER PLATE IS CLEARLY VISABLE**

**Note:** When fitting/refitting the licence plate to the vehicle, ensure there is no obstruction to licence plate vision in accordance with local authorities. If required relocate licence plate to an alternate location.

#### **Further VFPS Notes:**

- a) Do not attach VFPS to the vehicle using anchorages not intended for this purpose (e.g. engine mounting bolts).
- b) Do not use this product for any vehicle make or model, other than those specified by the VFPS manufacturer.
- c) Do not remove the plaque or label from the VFPS.
- d) Do not modify the structure of the VFPS in any way.
- e) No accessory or fitment should project forward of the VFPS forward profile.
- f) **ENSURE THESE INSTRUCTIONS ARE LEFT WITH VEHICLE OWNER AND/OR OPERATOR.**



East Coast Bullbars (ECB Pty Ltd)

Tel: 07 3897 5700

Fax: 07 3283 1168

ecb@ecb.com.au www.ecb.com.au

29 Snook St  
Clontarf QLD 4019  
Australia

Po Box 122  
Margate QLD 4019  
Australia

WORLD'S BEST  
ALLOY BULLBARS

**IMPORTANT INFORMATION**

Periodically check bolts and nuts for correct tightness, especially if travelling on rough roads

**FITTING KIT**

2 – Steel mounting angles.	2 – 3/8 x 1-1/2 bolts/washers on 250mm wire.
2 – 10NB x 50mm long steel chassis spacers.	2 – 3/8 nuts/washers 200mm wire.
2 – 40 x 6 round alloy washer with 10mm hole in centre.	6 – 3/8 nuts.
2 – 3/8 x 3 1/2 bolts.	12 – 3/8 flat washers.
4 – 3/8 x 1 1/2 bolts.	8 – 3/8 spring washers.



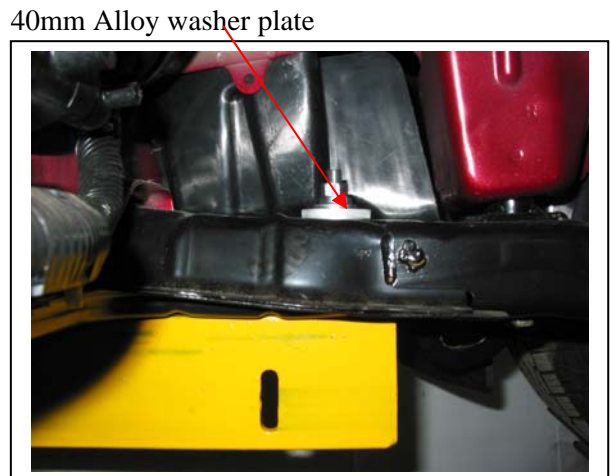
**Figure 1**



**Figure 2 – Passenger side steel mount angle shown**



**Figure 3 – Drivers side shown**



**Figure 4 – Drivers side shown**

40mm Alloy washer plate



East Coast Bullbars (ECB Pty Ltd)

Tel: 07 3897 5700

Fax: 07 3283 1168

ecb@ecb.com.au www.ecb.com.au

29 Snook St  
Clontarf QLD 4019  
Australia

Po Box 122  
Margate QLD 4019  
Australia



Figure 5 – Drivers side shown



Figure 6 – Drivers side shown



Figure 7 – View from passenger side



Figure 8

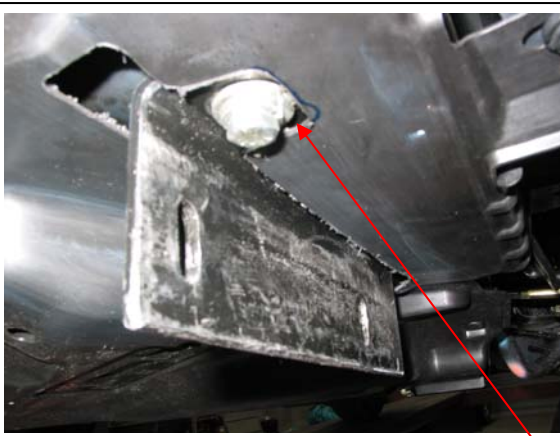


Figure 9 – Passenger side shown

Trim here to  
clear bolt head



Figure 10 – Series 2 Nudge Bar Side view



East Coast Bullbars (ECB Pty Ltd)

Tel: 07 3897 5700

Fax: 07 3283 1168

ecb@ecb.com.au www.ecb.com.au

29 Snook St  
Clontarf QLD 4019  
Australia

Po Box 122  
Margate QLD 4019  
Australia

WORLD'S BEST  
ALLOY BULLBARS



Figure 11 – Type 8 front view



Figure 12 – 63mm Nudge Bar side view







**WORLD'S BEST  
ALLOY BULLBARS**

**East Coast Bullbars (ECB Pty Ltd)**

Tel: 07 3897 5700

Fax: 07 3283 1168

ecb@ecb.com.au [www.ecb.com.au](http://www.ecb.com.au)

29 Snook St  
Clontarf QLD 4019  
Australia

Po Box 122  
Margate QLD 4019  
Australia



East Coast Bullbars (ECB Pty Ltd)

Tel: 07 3897 5700

Fax: 07 3283 1168

ecb@ecb.com.au www.ecb.com.au

29 Snook St  
Clontarf QLD 4019  
Australia

Po Box 122  
Margate QLD 4019  
Australia

WORLD'S BEST  
ALLOY BULLBARS

## DESPATCH CHECKLIST 8S61SY / NB6S61SY / NB6S62SY

Work Order #	
Finish:	
Transport:	
Due Date:	

**See other side of this page  
for photos of all mounts**

- 2 – Steel mounting angles.
- 2 – 10NB x 50mm long steel chassis spacers.
- 1 – Bolt Kit.



Is this product “the best it can be” Yes \_\_\_\_\_/\_\_\_\_\_  
If NO fix before continuing  
Wrapper's initials / Checker initials

All parts checked and completed by:

Nut and bolts: \_\_\_\_\_ Date \_\_/\_\_/\_\_

Order control: \_\_\_\_\_ Date \_\_/\_\_/\_\_

Final wrap check: \_\_\_\_\_ Date \_\_/\_\_/\_\_



**WORLD'S BEST  
ALLOY BULLBARS**

**East Coast Bullbars (ECB Pty Ltd)**

Tel: 07 3897 5700

Fax: 07 3283 1168

ecb@ecb.com.au www.ecb.com.au

29 Snook St  
Clontarf QLD 4019  
Australia

Po Box 122  
Margate QLD 4019  
Australia

